



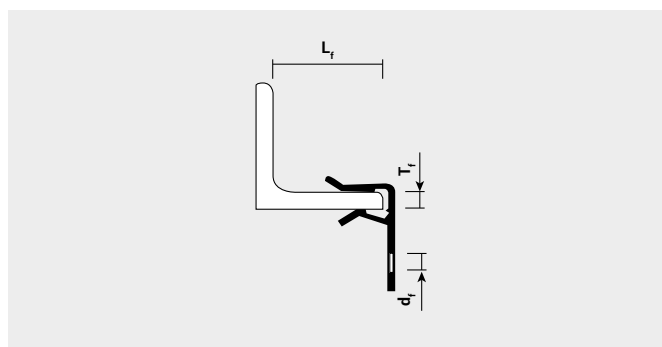
Features

- Fast and stable fixing system to metal beams.
- Parts combined to adapt to any requirement (application, corrosion, beam flange thickness...).
- Quickly installs with just a hammer without drilling nor welding.
- Zinc flake clamps and clips resistant to corrosion in salt water mist for up to 480 hours (DIN 50021).
- 6.3 mm hole to insert wire, S shape hook or bolts.
- Material: steel for springs (DIN 17222).

Certificates and approvals



Main dimensions

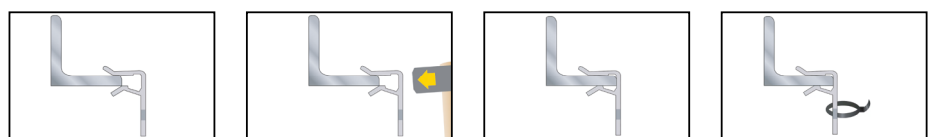


Reference	Flange thickness "T _f " [mm]	Minimum flange length "L _f " [mm]	Clearance hole "d _f " [mm]
915463CAL / 9415463CAL	1.5-4	18	6.3
941063CAL / 9441063CAL	4-10	25	6.3
9101563CAL / 94101563CAL	10-15	25	6.3
9152063CAL / 94152063CAL	15-20	25	6.3

Base materials

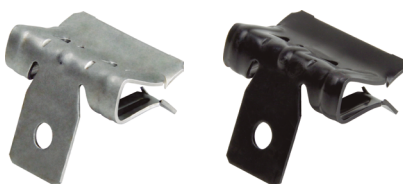
- Steel beams

Installation procedure



Available colors

- Black coating for indoor use.
- Grey for high resistance to corrosion.



Recommended loads

Reference	Recommended loads [kN]
915463CAL / 9415463CAL	0.7
941063CAL / 9441063CAL	0.9
9101563CAL / 94101563CAL	0.9
9152063CAL / 94152063CAL	0.9

Recommended load with safety factor ($\mu = 3$). The showed loads are the based on the static limit on vertical installation.